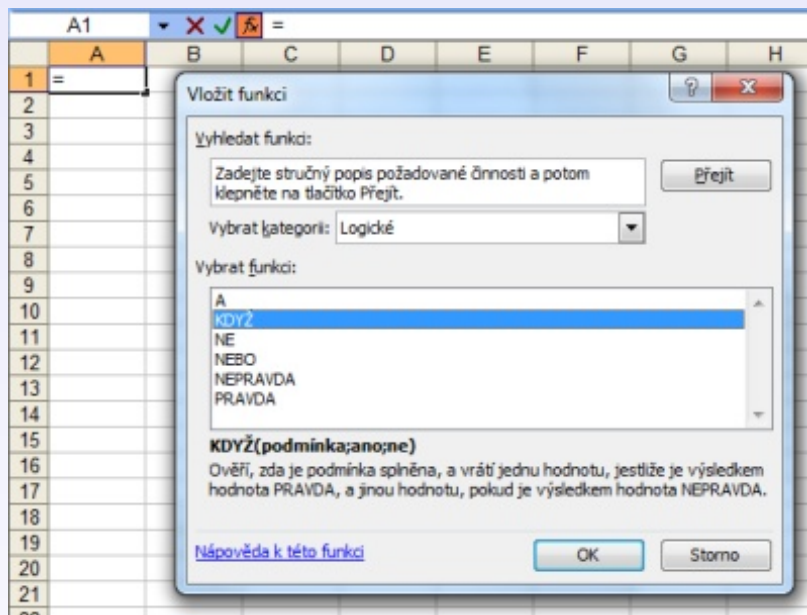
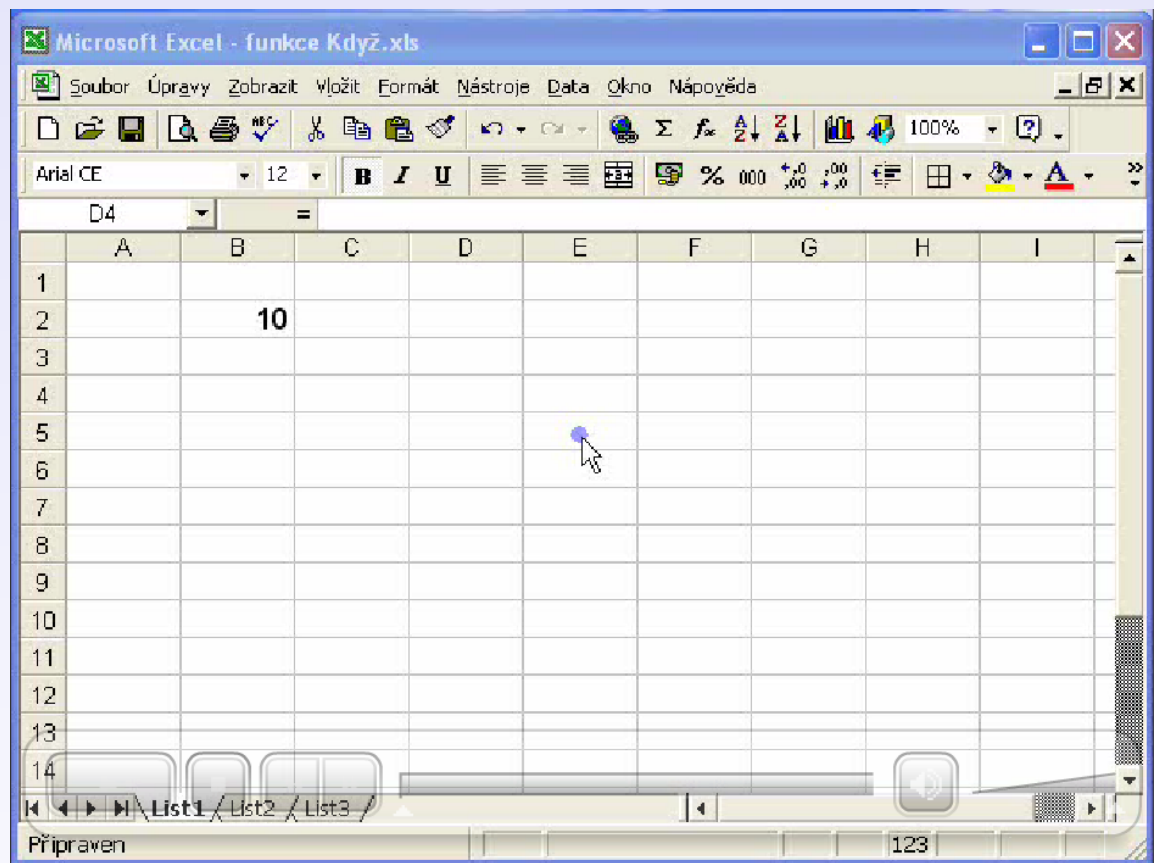


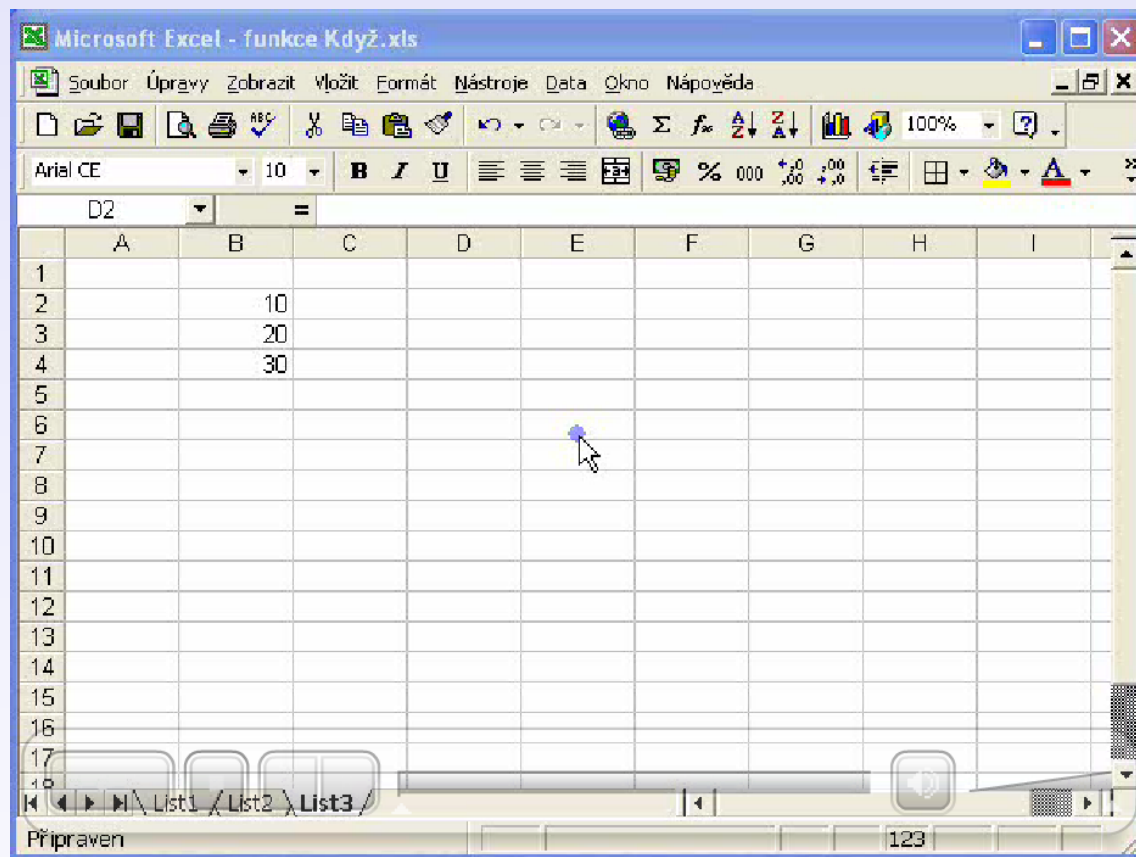
Tabulkový program výpočty s funkcí "Když"



Prohlédněte si video, vyplňte test







The screenshot shows a Microsoft Excel window titled "Microsoft Excel - funkce Když.xls". The menu bar includes "Soubor", "Úpravy", "Zobrazit", "Vložit", "Formát", "Nástroje", "Data", "Okno", and "Nápověda". The toolbar contains various icons for file operations, editing, and formatting. The active cell is D2, and the formula bar shows an equals sign. The spreadsheet has columns A through I and rows 1 through 17. The data in column B is as follows:

	A	B	C	D	E	F	G	H	I
1									
2		10							
3		20							
4		30							
5									
6									
7									
8									
9									
10									
11									
12									
13									
14									
15									
16									
17									

The status bar at the bottom shows "Připraven" and the page number "123".

Odpověz na otázky testu

Edit Q.1 ?

Mezi jaký druh funkcí "Když" patří

A	logické	C	statistické
B	textové	D	žádné